

Introducing Journeys Home:

A longitudinal study of factors affecting housing stability

Presenter: Mark Wooden



THE UNIVERSITY OF
MELBOURNE



MELBOURNE INSTITUTE
of Applied Economic and Social Research

Acknowledgements

- Australian Government Department of Social Services – *commissioned and funds Journeys Home*
- Fieldwork agency – Roy Morgan Research
- Melbourne Institute research team – *Andrew Bevitt, Abraham Chigavazira, Nicolas Herault, Guy Johnson, Eion Killackey, Julie Moschion, Rosanna Scutella, Yi-ping Tseng, Nicole Watson, Mark Wooden*

(Selected) Research Questions

- How persistent / episodic is homelessness?
- What characteristics distinguish at-risk families that become homeless from those that do not?
- What are the protective factors for avoiding or escaping homelessness?
- What are the key consequences of homelessness?
- Is there evidence of adaptation / acculturation to homelessness?

Key Design Features

- 6-wave panel; 6-month intervals
 - First wave conducted in Sept to Nov 2011
- Sample (~3000 cases issued)
 - Drawn from Centrelink customers (3 sub-samples)
 - Stratified by region and clustered
- Only follow persons that respond at w1
- F2F (CAPI) interviews wherever possible
 - Telephone is an option
- \$40 incentive
- Ave. interview length =1 hr in w1; =30-40 mins in w2-6
- Responses can be linked to CL data (94% consent rate).

Survey Content: Regular

Topic	Notes
Personal details	<i>Some details only collected in W1</i>
Employment	<i>Includes voluntary work</i>
Housing and living arrangements	
Support services and networks	
Health and well-being	<i>Includes substance use</i>
Contact with justice system	
Exposure to violence	
Income and financial stress	<i>Includes request to link to CL records. Includes gambling.</i>
Tracking information	

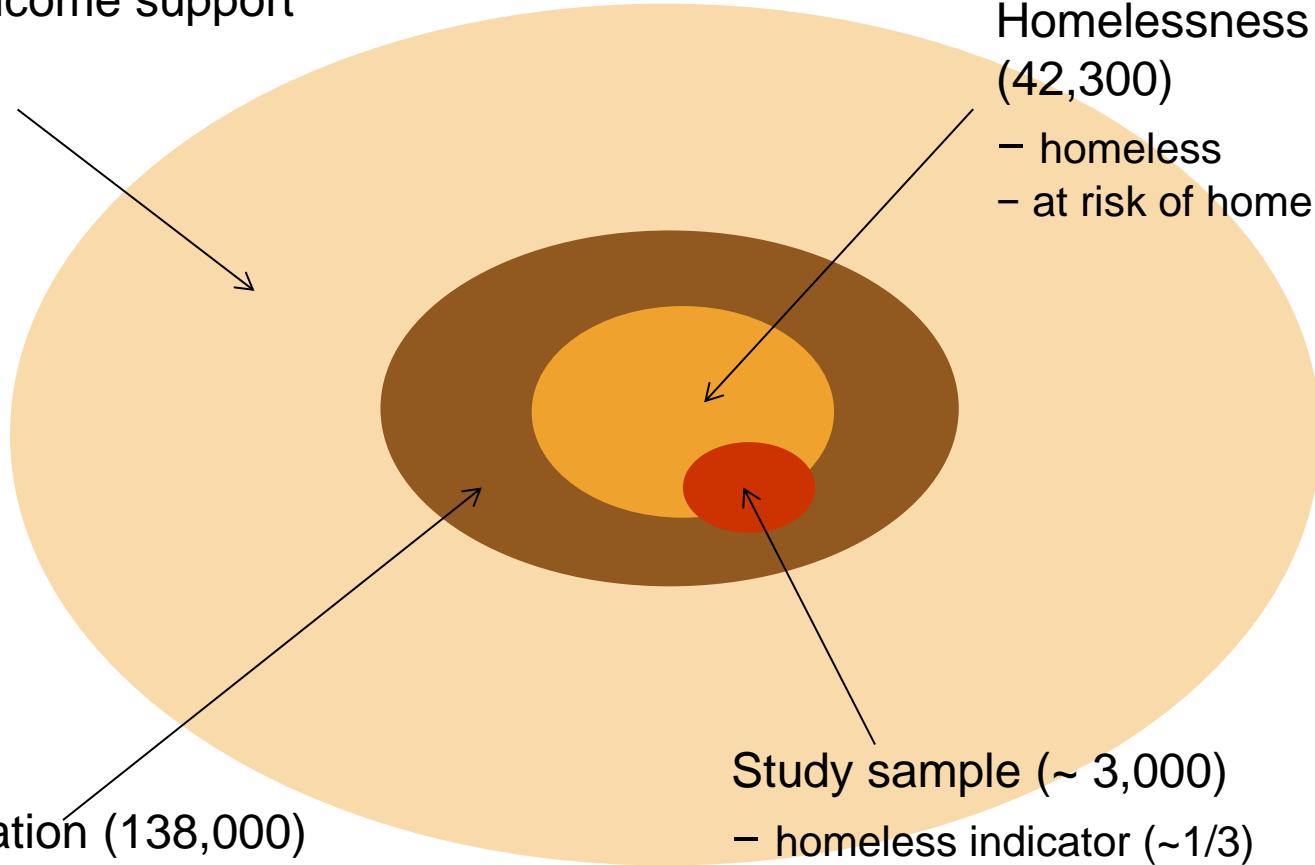
Survey Content: One-off Topics

Wave 1	Wave 5	Wave 6 (likely)
History	Mobile phone use	Internet use
Family	Diet	Sleep
Housing	Food security	Risk / time preferences
Employment	Personality	Personal control
Contact with justice system		Marital / relationships history
Exposure to violence		Parents' marital history
		Education / care of children

Sample Structure (not to scale)

Centrelink income support population (4.7m+)

Homelessness flags (42,300)
– homeless
– at risk of homelessness



Target population (138,000)
– includes 'vulnerable to homelessness' group

Study sample (~ 3,000)
– homeless indicator (~1/3)
– at risk of homelessness indicator (~1/3)
– vulnerable to homelessness (~1/3)

Sampling – Key Points

- CL flags not intended for enumeration of the homeless
- Size of vulnerable group (95,755) arbitrary
- Sample clustered – but clusters had to be “economically viable”
 - Only 200 of 739 clusters eligible
 - 36 selected
- Sample stratified, with NT over-sampled

Response Outcomes, W1

	N	% of total	% of total in-scope
Out-of-scope	273	9.1	
Non-contact	500	16.7	18.4
Other non-response*	529	17.7	19.5
Completed interviews	1676	56.0	61.6
Terminations**	14	0.5	0.5
TOTAL sample issued	2992	100.0	

* Refusal, incapable or contact made but no interview resulted.

** Six terminations were included in the sample issued for wave 2. Including these cases raises response rate to 61.9%.

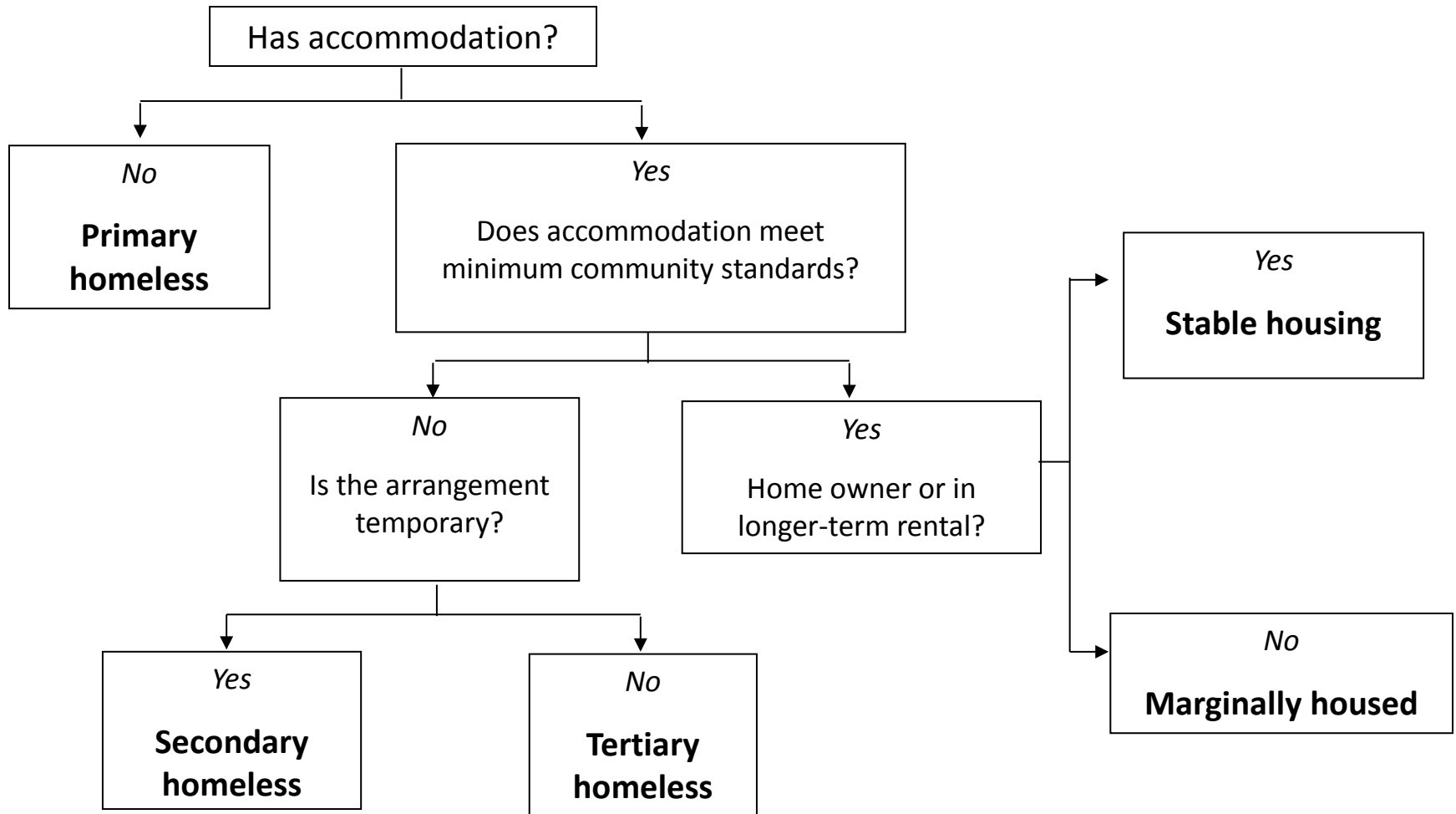
Response by Selected Characteristics (%)

Characteristic	Selected sample	In-scope sample	Responses (n=1682)	Response rate
Male	60.2	58.8	54.6	57.4
Female	39.8	41.2	45.4	68.2
Indigenous	22.3	17.7	17.2	60.1
Non-indigenous	77.8	82.3	82.8	62.2
<25	37.5	38.5	39.6	63.5
25-54	57.6	56.5	55.3	60.5
55+	5.0	5.0	5.2	64.0
W children	13.3	13.8	16.4	73.4
W/o children	86.7	86.2	83.6	60.0
History of psych probs	38.7	39.5	40.0	62.5
No history psych probs	61.4	60.5	60.1	61.4
Ex-offender	22.2	19.4	17.5	56.0
Not an ex-offender	77.8	80.6	82.5	63.3

Homelessness Experience, W1

	Sample Group			Total (%)
	'Homeless' (%)	'At-risk' (%)	'Vulnerable' (%)	
Homeless:				
At time of W1	25.7	22.1	15.4	21.4
Any time in prev 6 mths	56.2	45.7	45.9	49.4
Any time in life	97.2	94.1	89.3	93.8
Total (N)	580	626	475	1681

Classifying Housing Status



Response Outcomes, W2 to W5

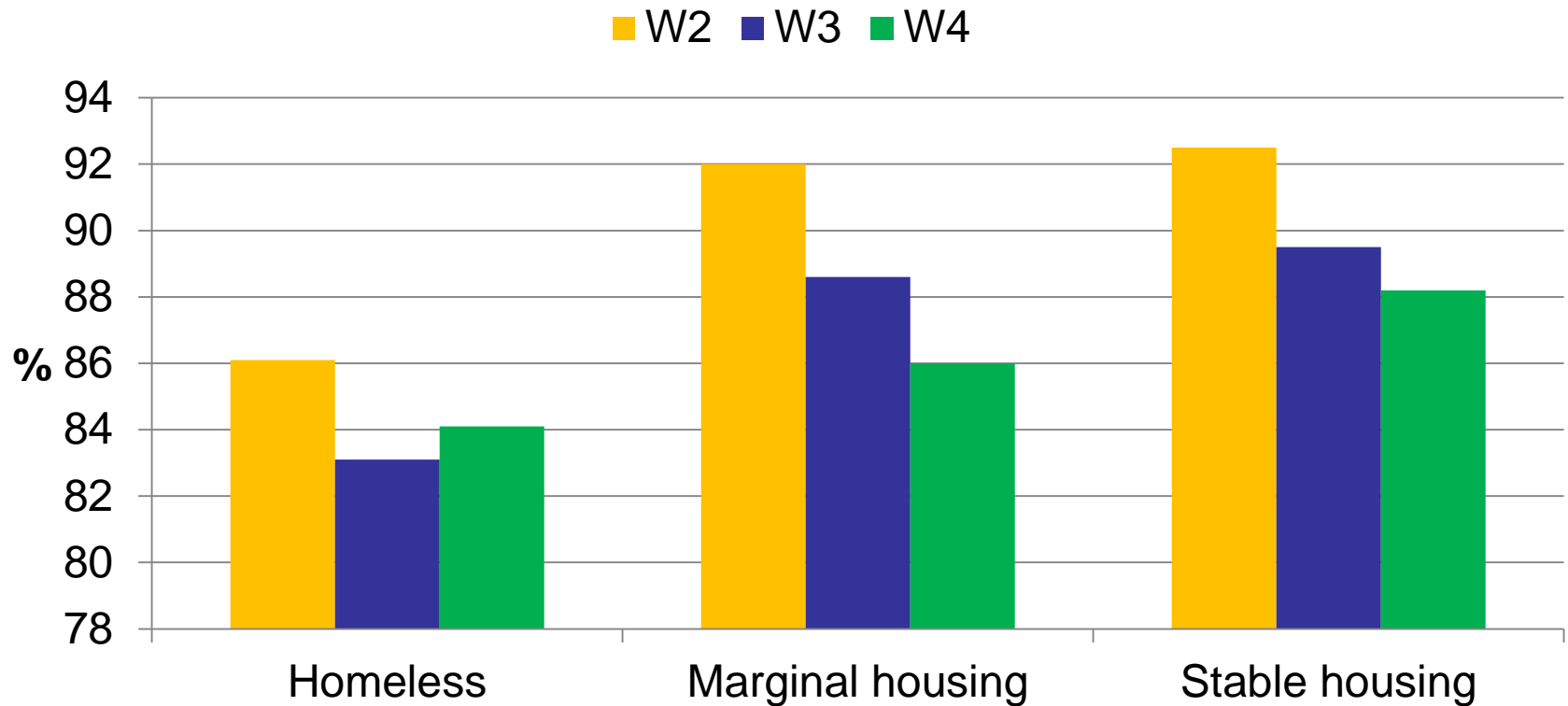
Outcome	Wave 2		Wave 3		Wave 4		Wave 5	
	N	%	N	%	N	%	N	%
Completed interview	1529	90.9	1473	87.6	1454	86.4	1422	84.5
Out of scope*	22	1.3	47	2.8	52	3.1	51	3.0
Non-contact	68	4.0	70	4.2	85	5.1	77	4.6
Other non-response**	63	3.7	92	5.5	91	5.4	132	7.8
TOTAL SAMPLE (W1 resp'ts)	1682	100	1682	100	1682	100	1682	100

* Out of scope includes persons who: have died; are overseas; are in prison; or are in some other institution.

** This category includes outcomes classified as: refusal, termination, incapable, and contact made but no interview resulted.

Response is Not Random

W2 / W3 / W4 response rates (%) by
W1 housing status



Further Information

- Data Survey article – *Australian Economic Review*, September 2012.
- Research reports on Journeys Home website:

http://www.melbourneinstitute.com/journeys_home/research/reports.html